



This Booklet contains **24** pages.

Do not open this Test Booklet until you are asked to do so.

Read carefully the Instructions on the Back Cover of this Test Booklet.

Important Instructions :

1. The Answer Sheet is inside this Test Booklet. When you are directed to open the Test Booklet, take out the Answer Sheet and fill in the particulars on **Side-1** and **Side-2** carefully with **blue/black** ball point pen only.
2. The test is of **3 hours** duration and this Test Booklet contains **180** questions. Each question carries **4** marks. For each correct response, the candidate will get **4** marks. For each incorrect response, **one mark** will be deducted from the total scores. The maximum marks are 720.
3. Use **Blue/Black Ball Point Pen only** for writing particulars on this page/markings responses.
4. Rough work is to be done on the space provided for this purpose in the Test Booklet only.
5. **On completion of the test, the candidate must hand over the Answer Sheet to the Invigilator before leaving the Room/Hall. The candidates are allowed to take away this Test Booklet with them.**
6. The CODE for this Booklet is **GG**. Make sure that the CODE printed on **Side-2** of the Answer Sheet is the same as that on this Test Booklet. In case of discrepancy, the candidate should immediately report the matter to the Invigilator for replacement of both the Test Booklet and the Answer Sheet.
7. The candidates should ensure that the Answer Sheet is not folded. Do not make any stray marks on the Answer Sheet. Do not write your Roll No. anywhere else except in the specified space in the Test Booklet/Answer Sheet.
8. Use of white fluid for correction is **not** permissible on the Answer Sheet.

Name of the Candidate (in Capitals) : _____

Roll Number : in figures _____

: in words _____

Centre of Examination (in Capitals) : _____

Candidate's Signature : _____ Invigilator's Signature : _____

Facsimile signature stamp of

Centre Superintendent : _____

1. Offsets are produced by
 - (1) Parthenocarpy
 - (2) Parthenogenesis
 - (3) Mitotic divisions
 - (4) Meiotic divisions
2. The experimental proof for semiconservative replication of DNA was first shown in a
 - (1) Plant
 - (2) Virus
 - (3) Bacterium
 - (4) Fungus
3. Select the **correct** match :
 - (1) Matthew Meselson – *Pisum sativum* and F. Stahl
 - (2) Francois Jacob and Jacques Monod – *Lac operon*
 - (3) Alfred Hershey and Martha Chase – TMV
 - (4) Alec Jeffreys – *Streptococcus pneumoniae*
4. Which of the following pairs is **wrongly** matched ?
 - (1) XO type sex Determination : Grasshopper
 - (2) T.H. Morgan : Linkage
 - (3) ABO blood grouping : Co-dominance
 - (4) Starch synthesis in pea : Multiple alleles
5. Select the **correct** statement :
 - (1) Spliceosomes take part in translation.
 - (2) Transduction was discovered by S. Altman.
 - (3) Punnett square was developed by a British scientist.
 - (4) Franklin Stahl coined the term “linkage”.
6. Which of the following has proved helpful in preserving pollen as fossils ?
 - (1) Oil content
 - (2) Sporopollenin
 - (3) Cellulosic intine
 - (4) Pollenkitt
7. Which of the following flowers only once in its life-time ?
 - (1) Mango
 - (2) Papaya
 - (3) Jackfruit
 - (4) Bamboo species
8. The correct order of steps in Polymerase Chain Reaction (PCR) is
 - (1) Denaturation, Extension, Annealing
 - (2) Denaturation, Annealing, Extension
 - (3) Annealing, Extension, Denaturation
 - (4) Extension, Denaturation, Annealing
9. In India, the organisation responsible for assessing the safety of introducing genetically modified organisms for public use is
 - (1) Research Committee on Genetic Manipulation (RCGM)
 - (2) Genetic Engineering Appraisal Committee (GEAC)
 - (3) Council for Scientific and Industrial Research (CSIR)
 - (4) Indian Council of Medical Research (ICMR)
10. Which of the following is commonly used as a vector for introducing a DNA fragment in human lymphocytes ?
 - (1) λ phage
 - (2) pBR 322
 - (3) Ti plasmid
 - (4) Retrovirus
11. Use of bioresources by multinational companies and organisations without authorisation from the concerned country and its people is called
 - (1) Biodegradation
 - (2) Bioexploitation
 - (3) Biopiracy
 - (4) Bio-infringement
12. A ‘new’ variety of rice was patented by a foreign company, though such varieties have been present in India for a long time. This is related to
 - (1) Lerma Rojo
 - (2) Basmati
 - (3) Sharbati Sonora
 - (4) Co-667
13. Select the **correct** match :
 - (1) T.H. Morgan – Transduction
 - (2) G. Mendel – Transformation
 - (3) $F_2 \times$ Recessive parent – Dihybrid cross
 - (4) Ribozyme – Nucleic acid

14. Which of the following is true for nucleolus ?
- (1) It takes part in spindle formation.
 - (2) It is a site for active ribosomal RNA synthesis.
 - (3) It is a membrane-bound structure.
 - (4) Larger nucleoli are present in dividing cells.
15. The Golgi complex participates in
- (1) Respiration in bacteria
 - (2) Activation of amino acid
 - (3) Formation of secretory vesicles
 - (4) Fatty acid breakdown
16. Which of the following is **not** a product of light reaction of photosynthesis ?
- (1) NADPH
 - (2) Oxygen
 - (3) NADH
 - (4) ATP
17. Which among the following is **not** a prokaryote ?
- (1) *Nostoc*
 - (2) *Oscillatoria*
 - (3) *Mycobacterium*
 - (4) *Saccharomyces*
18. Stomatal movement is **not** affected by
- (1) O₂ concentration
 - (2) CO₂ concentration
 - (3) Light
 - (4) Temperature
19. The two functional groups characteristic of sugars are
- (1) carbonyl and phosphate
 - (2) carbonyl and hydroxyl
 - (3) carbonyl and methyl
 - (4) hydroxyl and methyl
20. The stage during which separation of the paired homologous chromosomes begins is
- (1) Diakinesis
 - (2) Zygotene
 - (3) Diplotene
 - (4) Pachytene
21. Stomata in grass leaf are
- (1) Rectangular
 - (2) Barrel shaped
 - (3) Kidney shaped
 - (4) Dumb-bell shaped

22. Which one is **wrongly** matched ?
- (1) Gemma cups – *Marchantia*
 - (2) Unicellular organism – *Chlorella*
 - (3) Biflagellate zoospores – Brown algae
 - (4) Uniflagellate gametes – *Polysiphonia*
23. Match the items given in Column I with those in Column II and select the **correct** option given below :
- | Column I | Column II |
|--------------|---|
| a. Herbarium | i. It is a place having a collection of preserved plants and animals. |
| b. Key | ii. A list that enumerates methodically all the species found in an area with brief description aiding identification. |
| c. Museum | iii. Is a place where dried and pressed plant specimens mounted on sheets are kept. |
| d. Catalogue | iv. A booklet containing a list of characters and their alternates which are helpful in identification of various taxa. |
- | | a | b | c | d |
|-----|-----|----|-----|----|
| (1) | ii | iv | iii | i |
| (2) | iii | iv | i | ii |
| (3) | iii | ii | i | iv |
| (4) | i | iv | iii | ii |
24. Winged pollen grains are present in
- (1) Mango
 - (2) *Pinus*
 - (3) *Cycas*
 - (4) Mustard
25. After karyogamy followed by meiosis, spores are produced exogenously in
- (1) *Agaricus*
 - (2) *Saccharomyces*
 - (3) *Alternaria*
 - (4) *Neurospora*

- 26.** Oxygen is *not* produced during photosynthesis by
- (1) *Cycas*
 - (2) *Chara*
 - (3) *Nostoc*
 - (4) Green sulphur bacteria
- 27.** Double fertilization is
- (1) Fusion of two male gametes with one egg
 - (2) Syngamy and triple fusion
 - (3) Fusion of one male gamete with two polar nuclei
 - (4) Fusion of two male gametes of a pollen tube with two different eggs
- 28.** Which of the following elements is responsible for maintaining turgor in cells ?
- (1) Potassium
 - (2) Calcium
 - (3) Sodium
 - (4) Magnesium
- 29.** Which one of the following plants shows a very close relationship with a species of moth, where none of the two can complete its life cycle without the other ?
- (1) Banana
 - (2) *Viola*
 - (3) *Yucca*
 - (4) *Hydrilla*
- 30.** Pollen grains can be stored for several years in liquid nitrogen having a temperature of
- (1) -196°C
 - (2) -160°C
 - (3) -80°C
 - (4) -120°C
- 31.** What is the role of NAD^{+} in cellular respiration ?
- (1) It is a nucleotide source for ATP synthesis.
 - (2) It is the final electron acceptor for anaerobic respiration.
 - (3) It functions as an electron carrier.
 - (4) It functions as an enzyme.
- 32.** In which of the following forms is iron absorbed by plants ?
- (1) Free element
 - (2) Both ferric and ferrous
 - (3) Ferrous
 - (4) Ferric
- 33.** Niche is
- (1) the range of temperature that the organism needs to live
 - (2) the functional role played by the organism where it lives
 - (3) the physical space where an organism lives
 - (4) all the biological factors in the organism's environment
- 34.** Which of the following is a secondary pollutant ?
- (1) SO_2
 - (2) O_3
 - (3) CO_2
 - (4) CO
- 35.** Natalty refers to
- (1) Number of individuals leaving the habitat
 - (2) Number of individuals entering a habitat
 - (3) Birth rate
 - (4) Death rate
- 36.** World Ozone Day is celebrated on
- (1) 16th September
 - (2) 22nd April
 - (3) 21st April
 - (4) 5th June
- 37.** What type of ecological pyramid would be obtained with the following data ?
- Secondary consumer : 120 g
Primary consumer : 60 g
Primary producer : 10 g
- (1) Upright pyramid of numbers
 - (2) Upright pyramid of biomass
 - (3) Pyramid of energy
 - (4) Inverted pyramid of biomass
- 38.** In stratosphere, which of the following elements acts as a catalyst in degradation of ozone and release of molecular oxygen ?
- (1) Fe
 - (2) Oxygen
 - (3) Cl
 - (4) Carbon

39. Casparian strips occur in
 (1) Cortex
 (2) Endodermis
 (3) Pericycle
 (4) Epidermis
40. Plants having little or no secondary growth are
 (1) Conifers
 (2) Cycads
 (3) Deciduous angiosperms
 (4) Grasses
41. Pneumatophores occur in
 (1) Carnivorous plants
 (2) Submerged hydrophytes
 (3) Free-floating hydrophytes
 (4) Halophytes
42. Sweet potato is a modified
 (1) Tap root
 (2) Rhizome
 (3) Adventitious root
 (4) Stem
43. Which of the following statements is **correct** ?
 (1) Horsetails are gymnosperms.
 (2) Stems are usually unbranched in both *Cycas* and *Cedrus*.
 (3) *Selaginella* is heterosporous, while *Salvinia* is homosporous.
 (4) Ovules are not enclosed by ovary wall in gymnosperms.
44. Select the **wrong** statement :
 (1) Pseudopodia are locomotory and feeding structures in Sporozoans.
 (2) Mitochondria are the powerhouse of the cell in all kingdoms except Monera.
 (3) Mushrooms belong to Basidiomycetes.
 (4) Cell wall is present in members of Fungi and Plantae.
45. Secondary xylem and phloem in dicot stem are produced by
 (1) Phellogen
 (2) Axillary meristems
 (3) Vascular cambium
 (4) Apical meristems

46. Match the items given in Column I with those in Column II and select the **correct** option given below :

<i>Column I</i>		<i>Column II</i>	
a. Glycosuria		i. Accumulation of uric acid in joints	
b. Gout		ii. Mass of crystallised salts within the kidney	
c. Renal calculi		iii. Inflammation in glomeruli	
d. Glomerular nephritis		iv. Presence of glucose in urine	
	a	b	c
(1)	ii	iii	i
(2)	iv	i	ii
(3)	i	ii	iii
(4)	iii	ii	iv

47. Match the items given in Column I with those in Column II and select the **correct** option given below :

<i>Column I</i> (Function)		<i>Column II</i> (Part of Excretory System)	
a. Ultrafiltration		i. Henle's loop	
b. Concentration of urine		ii. Ureter	
c. Transport of urine		iii. Urinary bladder	
d. Storage of urine		iv. Malpighian corpuscle	
	a	b	c
(1)	v	iv	i
(2)	v	iv	i
(3)	iv	i	ii
(4)	iv	v	ii

48. Among the following sets of examples for divergent evolution, select the **incorrect** option :
- (1) Brain of bat, man and cheetah
 - (2) Eye of octopus, bat and man
 - (3) Heart of bat, man and cheetah
 - (4) Forelimbs of man, bat and cheetah
49. Which of the following is **not** an autoimmune disease ?
- (1) Alzheimer's disease
 - (2) Vitiligo
 - (3) Rheumatoid arthritis
 - (4) Psoriasis
50. Which of the following characteristics represent 'Inheritance of blood groups' in humans ?
- a. Dominance
 - b. Co-dominance
 - c. Multiple allele
 - d. Incomplete dominance
 - e. Polygenic inheritance
- (1) b, d and e
 - (2) a, c and e
 - (3) a, b and c
 - (4) b, c and e
51. Conversion of milk to curd improves its nutritional value by increasing the amount of
- (1) Vitamin B₁₂
 - (2) Vitamin E
 - (3) Vitamin A
 - (4) Vitamin D
52. The similarity of bone structure in the forelimbs of many vertebrates is an example of
- (1) Convergent evolution
 - (2) Adaptive radiation
 - (3) Analogy
 - (4) Homology
53. In which disease does mosquito transmitted pathogen cause chronic inflammation of lymphatic vessels ?
- (1) Ringworm disease
 - (2) Amoebiasis
 - (3) Ascariasis
 - (4) Elephantiasis
54. Which of the following animals does **not** undergo metamorphosis ?
- (1) Moth
 - (2) Starfish
 - (3) Tunicate
 - (4) Earthworm
55. Which one of these animals is **not** a homeotherm ?
- (1) *Camelus*
 - (2) *Psittacula*
 - (3) *Chelone*
 - (4) *Macropus*
56. Which of the following features is used to identify a male cockroach from a female cockroach ?
- (1) Forewings with darker tegmina
 - (2) Presence of anal cerci
 - (3) Presence of caudal styles
 - (4) Presence of a boat shaped sternum on the 9th abdominal segment
57. Which of the following organisms are known as chief producers in the oceans ?
- (1) Cyanobacteria
 - (2) Euglenoids
 - (3) Diatoms
 - (4) Dinoflagellates
58. Ciliates differ from all other protozoans in
- (1) using pseudopodia for capturing prey
 - (2) having two types of nuclei
 - (3) having a contractile vacuole for removing excess water
 - (4) using flagella for locomotion
59. Identify the vertebrate group of animals characterized by crop and gizzard in its digestive system.
- (1) Aves
 - (2) Osteichthyes
 - (3) Reptilia
 - (4) Amphibia

- 60.** Hormones secreted by the placenta to maintain pregnancy are
- (1) hCG, hPL, progesterones, estrogens
 - (2) hCG, progesterones, estrogens, glucocorticoids
 - (3) hCG, hPL, estrogens, relaxin, oxytocin
 - (4) hCG, hPL, progesterones, prolactin
- 61.** The contraceptive 'SAHELI'
- (1) is an IUD.
 - (2) is a post-coital contraceptive.
 - (3) increases the concentration of estrogen and prevents ovulation in females.
 - (4) blocks estrogen receptors in the uterus, preventing eggs from getting implanted.
- 62.** The amnion of mammalian embryo is derived from
- (1) mesoderm and trophoblast
 - (2) ectoderm and endoderm
 - (3) endoderm and mesoderm
 - (4) ectoderm and mesoderm
- 63.** The difference between spermiogenesis and spermiation is
- (1) In spermiogenesis spermatozoa from sertoli cells are released into the cavity of seminiferous tubules, while in spermiation spermatozoa are formed.
 - (2) In spermiogenesis spermatozoa are formed, while in spermiation spermatozoa are released from sertoli cells into the cavity of seminiferous tubules.
 - (3) In spermiogenesis spermatozoa are formed, while in spermiation spermatids are formed.
 - (4) In spermiogenesis spermatids are formed, while in spermiation spermatozoa are formed.
- 64.** In a growing population of a country,
- (1) reproductive and pre-reproductive individuals are equal in number.
 - (2) pre-reproductive individuals are less than the reproductive individuals.
 - (3) reproductive individuals are less than the post-reproductive individuals.
 - (4) pre-reproductive individuals are more than the reproductive individuals.
- 65.** Which part of poppy plant is used to obtain the drug "Smack" ?
- (1) Roots
 - (2) Leaves
 - (3) Latex
 - (4) Flowers
- 66.** Match the items given in Column I with those in Column II and select the **correct** option given below :
- | <i>Column I</i> | <i>Column II</i> |
|----------------------|--------------------------|
| a. Eutrophication | i. UV-B radiation |
| b. Sanitary landfill | ii. Deforestation |
| c. Snow blindness | iii. Nutrient enrichment |
| d. Jhum cultivation | iv. Waste disposal |
| a | b |
| c | d |
| (1) iii | iv |
| (2) i | ii |
| (3) i | iii |
| (4) ii | i |
- 67.** Which one of the following population interactions is widely used in medical science for the production of antibiotics ?
- (1) Parasitism
 - (2) Amensalism
 - (3) Mutualism
 - (4) Commensalism
- 68.** All of the following are included in 'Ex-situ conservation' *except*
- (1) Botanical gardens
 - (2) Seed banks
 - (3) Sacred groves
 - (4) Wildlife safari parks

69. Which of the following gastric cells indirectly help in erythropoiesis ?

- (1) Goblet cells
- (2) Parietal cells
- (3) Mucous cells
- (4) Chief cells

70. Match the items given in Column I with those in Column II and select the **correct** option given below :

Column I

Column II

- | | |
|---------------|------------------------|
| a. Fibrinogen | i. Osmotic balance |
| b. Globulin | ii. Blood clotting |
| c. Albumin | iii. Defence mechanism |

a b c

- | | | |
|---------|-----|-----|
| (1) i | iii | ii |
| (2) ii | iii | i |
| (3) i | ii | iii |
| (4) iii | ii | i |

71. Calcium is important in skeletal muscle contraction because it

- (1) detaches the myosin head from the actin filament.
- (2) prevents the formation of bonds between the myosin cross bridges and the actin filament.
- (3) activates the myosin ATPase by binding to it.
- (4) binds to troponin to remove the masking of active sites on actin for myosin.

72. Which of the following is an occupational respiratory disorder ?

- (1) Botulism
- (2) Emphysema
- (3) Silicosis
- (4) Anthracis

73. Which of the following is an amino acid derived hormone ?

- (1) Estradiol
- (2) Estriol
- (3) Ecdysone
- (4) Epinephrine

74. Which of the following structures or regions is **incorrectly** paired with its function ?

- | | | |
|-----------------------|---|---|
| (1) Hypothalamus | : | production of releasing hormones and regulation of temperature, hunger and thirst. |
| (2) Corpus callosum | : | band of fibers connecting left and right cerebral hemispheres. |
| (3) Limbic system | : | consists of fibre tracts that interconnect different regions of brain; controls movement. |
| (4) Medulla oblongata | : | controls respiration and cardiovascular reflexes. |

75. Which of the following hormones can play a significant role in osteoporosis ?

- (1) Estrogen and Parathyroid hormone
- (2) Parathyroid hormone and Prolactin
- (3) Progesterone and Aldosterone
- (4) Aldosterone and Prolactin

76. The transparent lens in the human eye is held in its place by

- (1) smooth muscles attached to the iris
- (2) smooth muscles attached to the ciliary body
- (3) ligaments attached to the iris
- (4) ligaments attached to the ciliary body

77. Which of the following options correctly represents the lung conditions in asthma and emphysema, respectively ?

- (1) Increased respiratory surface; Inflammation of bronchioles
- (2) Decreased respiratory surface; Inflammation of bronchioles
- (3) Increased number of bronchioles; Increased respiratory surface
- (4) Inflammation of bronchioles; Decreased respiratory surface

78. Match the items given in Column I with those in Column II and select the **correct** option given below :

<i>Column I</i>		<i>Column II</i>	
a. Tricuspid valve	i.	Between left atrium and left ventricle	
b. Bicuspid valve	ii.	Between right ventricle and pulmonary artery	
c. Semilunar valve	iii.	Between right atrium and right ventricle	

- | | a | b | c |
|-----|----------|----------|----------|
| (1) | i | ii | iii |
| (2) | ii | i | iii |
| (3) | i | iii | ii |
| (4) | iii | i | ii |

79. Match the items given in Column I with those in Column II and select the **correct** option given below :

<i>Column I</i>		<i>Column II</i>	
a. Tidal volume	i.	2500 – 3000 mL	
b. Inspiratory Reserve volume	ii.	1100 – 1200 mL	
c. Expiratory Reserve volume	iii.	500 – 550 mL	
d. Residual volume	iv.	1000 – 1100 mL	

- | | a | b | c | d |
|-----|----------|----------|----------|----------|
| (1) | i | iv | ii | iii |
| (2) | iv | iii | ii | i |
| (3) | iii | i | iv | ii |
| (4) | iii | ii | i | iv |

80. Nissl bodies are mainly composed of

- (1) Nucleic acids and SER
- (2) Free ribosomes and RER
- (3) DNA and RNA
- (4) Proteins and lipids

81. Which of these statements is **incorrect** ?

- (1) Glycolysis operates as long as it is supplied with NAD that can pick up hydrogen atoms.
- (2) Oxidative phosphorylation takes place in outer mitochondrial membrane.
- (3) Glycolysis occurs in cytosol.
- (4) Enzymes of TCA cycle are present in mitochondrial matrix.

82. Many ribosomes may associate with a single mRNA to form multiple copies of a polypeptide simultaneously. Such strings of ribosomes are termed as

- (1) Plastidome
- (2) Nucleosome
- (3) Polyhedral bodies
- (4) Polysome

83. Which of the following terms describe human dentition ?

- (1) Pleurodont, Monophyodont, Homodont
- (2) Pleurodont, Diphyodont, Heterodont
- (3) Thecodont, Diphyodont, Heterodont
- (4) Thecodont, Diphyodont, Homodont

84. Which of the following events does **not** occur in rough endoplasmic reticulum ?

- (1) Cleavage of signal peptide
- (2) Phospholipid synthesis
- (3) Protein glycosylation
- (4) Protein folding

85. Select the **incorrect** match :

- (1) Submetacentric – L-shaped chromosomes
- (2) Polytene – Oocytes of amphibians
- (3) Allosomes – Sex chromosomes
- (4) Lampbrush – Diplotene bivalents

86. AGGTATCGCAT is a sequence from the coding strand of a gene. What will be the corresponding sequence of the transcribed mRNA ?

- (1) ACCUAUGCGAU
- (2) UCCAUAGCGUA
- (3) UGGTUTCGCAT
- (4) AGGUAUCGCAU

87. According to Hugo de Vries, the mechanism of evolution is

- (1) Phenotypic variations
- (2) Minor mutations
- (3) Saltation
- (4) Multiple step mutations

88. Match the items given in Column I with those in Column II and select the **correct** option given below :

Column I

Column II

- | | |
|------------------------|------------------------------------|
| a. Proliferative Phase | i. Breakdown of endometrial lining |
| b. Secretory Phase | ii. Follicular Phase |
| c. Menstruation | iii. Luteal Phase |

a b c

- (1) ii iii i
- (2) iii i ii
- (3) i iii ii
- (4) iii ii i

89. All of the following are part of an operon *except*

- (1) an enhancer
- (2) a promoter
- (3) structural genes
- (4) an operator

90. A woman has an X-linked condition on one of her X chromosomes. This chromosome can be inherited by

- (1) Only grandchildren
- (2) Both sons and daughters
- (3) Only sons
- (4) Only daughters

91. A tuning fork is used to produce resonance in a glass tube. The length of the air column in this tube can be adjusted by a variable piston. At room temperature of 27°C two successive resonances are produced at 20 cm and 73 cm of column length. If the frequency of the tuning fork is 320 Hz, the velocity of sound in air at 27°C is

- (1) 350 m/s
- (2) 300 m/s
- (3) 339 m/s
- (4) 330 m/s

92. The electrostatic force between the metal plates of an isolated parallel plate capacitor C having a charge Q and area A, is

- (1) proportional to the square root of the distance between the plates.
- (2) inversely proportional to the distance between the plates.
- (3) linearly proportional to the distance between the plates.
- (4) independent of the distance between the plates.

93. An electron falls from rest through a vertical distance h in a uniform and vertically upward directed electric field E. The direction of electric field is now reversed, keeping its magnitude the same. A proton is allowed to fall from rest in it through the same vertical distance h. The time of fall of the electron, in comparison to the time of fall of the proton is

- (1) 10 times greater
- (2) equal
- (3) 5 times greater
- (4) smaller

94. A pendulum is hung from the roof of a sufficiently high building and is moving freely to and fro like a simple harmonic oscillator. The acceleration of the bob of the pendulum is 20 m/s^2 at a distance of 5 m from the mean position. The time period of oscillation is

- (1) 2 s
- (2) 1 s
- (3) π s
- (4) 2π s

95. Current sensitivity of a moving coil galvanometer is 5 div/mA and its voltage sensitivity (angular deflection per unit voltage applied) is 20 div/V. The resistance of the galvanometer is
- (1) 250 Ω
 - (2) 500 Ω
 - (3) 25 Ω
 - (4) 40 Ω
96. A metallic rod of mass per unit length 0.5 kg m⁻¹ is lying horizontally on a smooth inclined plane which makes an angle of 30° with the horizontal. The rod is not allowed to slide down by flowing a current through it when a magnetic field of induction 0.25 T is acting on it in the vertical direction. The current flowing in the rod to keep it stationary is
- (1) 14.76 A
 - (2) 11.32 A
 - (3) 5.98 A
 - (4) 7.14 A
97. A thin diamagnetic rod is placed vertically between the poles of an electromagnet. When the current in the electromagnet is switched on, then the diamagnetic rod is pushed up, out of the horizontal magnetic field. Hence the rod gains gravitational potential energy. The work required to do this comes from
- (1) the lattice structure of the material of the rod
 - (2) the induced electric field due to the changing magnetic field
 - (3) the magnetic field
 - (4) the current source
98. An inductor 20 mH, a capacitor 100 μ F and a resistor 50 Ω are connected in series across a source of emf, $V = 10 \sin 314 t$. The power loss in the circuit is
- (1) 2.74 W
 - (2) 1.13 W
 - (3) 0.43 W
 - (4) 0.79 W
99. An object is placed at a distance of 40 cm from a concave mirror of focal length 15 cm. If the object is displaced through a distance of 20 cm towards the mirror, the displacement of the image will be
- (1) 30 cm towards the mirror
 - (2) 36 cm towards the mirror
 - (3) 36 cm away from the mirror
 - (4) 30 cm away from the mirror
100. An em wave is propagating in a medium with a velocity $\vec{V} = V \hat{i}$. The instantaneous oscillating electric field of this em wave is along +y axis. Then the direction of oscillating magnetic field of the em wave will be along
- (1) -y direction
 - (2) -x direction
 - (3) +z direction
 - (4) -z direction
101. The magnetic potential energy stored in a certain inductor is 25 mJ, when the current in the inductor is 60 mA. This inductor is of inductance
- (1) 1.389 H
 - (2) 13.89 H
 - (3) 138.88 H
 - (4) 0.138 H
102. The refractive index of the material of a prism is $\sqrt{2}$ and the angle of the prism is 30°. One of the two refracting surfaces of the prism is made a mirror inwards, by silver coating. A beam of monochromatic light entering the prism from the other face will retrace its path (after reflection from the silvered surface) if its angle of incidence on the prism is
- (1) 30°
 - (2) zero
 - (3) 45°
 - (4) 60°

103. The ratio of kinetic energy to the total energy of an electron in a Bohr orbit of the hydrogen atom, is

- (1) 2 : -1
- (2) 1 : -2
- (3) 1 : -1
- (4) 1 : 1

104. An electron of mass m with an initial velocity $\vec{V} = V_0 \hat{i}$ ($V_0 > 0$) enters an electric field $\vec{E} = -E_0 \hat{i}$ ($E_0 = \text{constant} > 0$) at $t = 0$. If λ_0 is its de-Broglie wavelength initially, then its de-Broglie wavelength at time t is

- (1) $\lambda_0 t$
- (2) λ_0
- (3) $\lambda_0 \left(1 + \frac{eE_0 t}{mV_0} \right)$
- (4) $\frac{\lambda_0}{\left(1 + \frac{eE_0 t}{mV_0} \right)}$

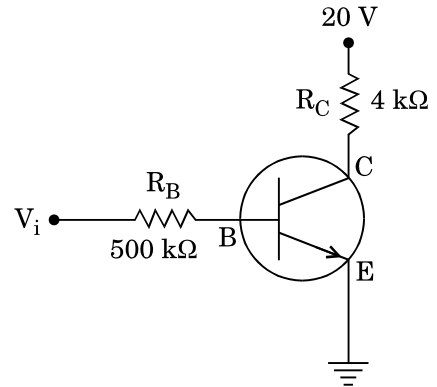
105. For a radioactive material, half-life is 10 minutes. If initially there are 600 number of nuclei, the time taken (in minutes) for the disintegration of 450 nuclei is

- (1) 30
- (2) 15
- (3) 10
- (4) 20

106. When the light of frequency $2\nu_0$ (where ν_0 is threshold frequency), is incident on a metal plate, the maximum velocity of electrons emitted is v_1 . When the frequency of the incident radiation is increased to $5\nu_0$, the maximum velocity of electrons emitted from the same plate is v_2 . The ratio of v_1 to v_2 is

- (1) 4 : 1
- (2) 2 : 1
- (3) 1 : 4
- (4) 1 : 2

107. In the circuit shown in the figure, the input voltage V_i is 20 V, $V_{BE} = 0$ and $V_{CE} = 0$. The values of I_B , I_C and β are given by

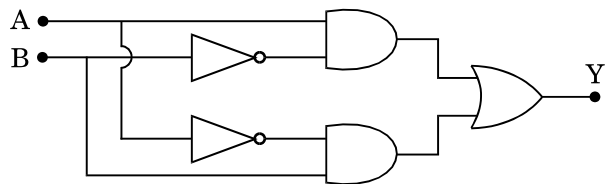


- (1) $I_B = 20 \mu\text{A}$, $I_C = 5 \text{mA}$, $\beta = 250$
- (2) $I_B = 40 \mu\text{A}$, $I_C = 5 \text{mA}$, $\beta = 125$
- (3) $I_B = 25 \mu\text{A}$, $I_C = 5 \text{mA}$, $\beta = 200$
- (4) $I_B = 40 \mu\text{A}$, $I_C = 10 \text{mA}$, $\beta = 250$

108. In a p-n junction diode, change in temperature due to heating

- (1) does not affect resistance of p-n junction
- (2) affects the overall $V - I$ characteristics of p-n junction
- (3) affects only forward resistance
- (4) affects only reverse resistance

109. In the combination of the following gates the output Y can be written in terms of inputs A and B as



- (1) $\overline{A} \cdot B + A \cdot B$
- (2) $\overline{A + B}$
- (3) $A \cdot \overline{B} + \overline{A} \cdot B$
- (4) $\overline{A \cdot B}$

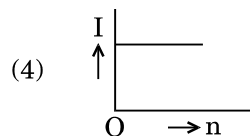
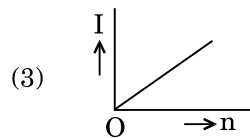
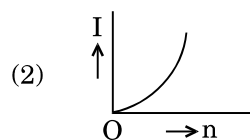
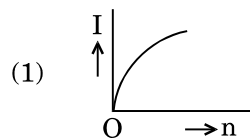
110. A carbon resistor of $(47 \pm 4.7) \text{ k}\Omega$ is to be marked with rings of different colours for its identification. The colour code sequence will be

- (1) Yellow – Green – Violet – Gold
- (2) Green – Orange – Violet – Gold
- (3) Yellow – Violet – Orange – Silver
- (4) Violet – Yellow – Orange – Silver

111. A set of 'n' equal resistors, of value 'R' each, are connected in series to a battery of emf 'E' and internal resistance 'R'. The current drawn is I. Now, the 'n' resistors are connected in parallel to the same battery. Then the current drawn from battery becomes 10 I. The value of 'n' is

- (1) 20
- (2) 9
- (3) 11
- (4) 10

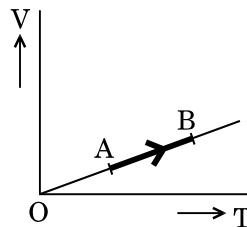
112. A battery consists of a variable number 'n' of identical cells (having internal resistance 'r' each) which are connected in series. The terminals of the battery are short-circuited and the current I is measured. Which of the graphs shows the correct relationship between I and n?



113. The efficiency of an ideal heat engine working between the freezing point and boiling point of water, is

- (1) 6.25%
- (2) 12.5%
- (3) 20%
- (4) 26.8%

114. The volume (V) of a monatomic gas varies with its temperature (T), as shown in the graph. The ratio of work done by the gas, to the heat absorbed by it, when it undergoes a change from state A to state B, is



- (1) $\frac{1}{3}$
- (2) $\frac{2}{7}$
- (3) $\frac{2}{3}$
- (4) $\frac{2}{5}$

115. The fundamental frequency in an open organ pipe is equal to the third harmonic of a closed organ pipe. If the length of the closed organ pipe is 20 cm, the length of the open organ pipe is

- (1) 12.5 cm
- (2) 16 cm
- (3) 8 cm
- (4) 13.2 cm

116. At what temperature will the rms speed of oxygen molecules become just sufficient for escaping from the Earth's atmosphere?

(Given :

Mass of oxygen molecule (m) = $2.76 \times 10^{-26} \text{ kg}$

Boltzmann's constant $k_B = 1.38 \times 10^{-23} \text{ J K}^{-1}$)

- (1) $5.016 \times 10^4 \text{ K}$
- (2) $1.254 \times 10^4 \text{ K}$
- (3) $8.360 \times 10^4 \text{ K}$
- (4) $2.508 \times 10^4 \text{ K}$

117. The power radiated by a black body is P and it radiates maximum energy at wavelength, λ_0 . If the temperature of the black body is now changed so that it radiates maximum energy at wavelength $\frac{3}{4}\lambda_0$, the power radiated by it becomes nP . The value of n is

- (1) $\frac{256}{81}$
- (2) $\frac{81}{256}$
- (3) $\frac{4}{3}$
- (4) $\frac{3}{4}$

118. Two wires are made of the same material and have the same volume. The first wire has cross-sectional area A and the second wire has cross-sectional area $3A$. If the length of the first wire is increased by Δl on applying a force F , how much force is needed to stretch the second wire by the same amount ?

- (1) $4F$
- (2) F
- (3) $6F$
- (4) $9F$

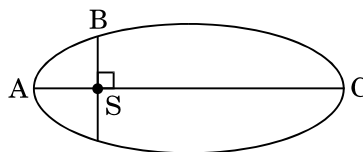
119. A small sphere of radius ' r ' falls from rest in a viscous liquid. As a result, heat is produced due to viscous force. The rate of production of heat when the sphere attains its terminal velocity, is proportional to

- (1) r^5
- (2) r^4
- (3) r^2
- (4) r^3

120. A sample of 0.1 g of water at 100°C and normal pressure ($1.013 \times 10^5 \text{ Nm}^{-2}$) requires 54 cal of heat energy to convert to steam at 100°C . If the volume of the steam produced is 167.1 cc, the change in internal energy of the sample, is

- (1) 42.2 J
- (2) 84.5 J
- (3) 208.7 J
- (4) 104.3 J

121. The kinetic energies of a planet in an elliptical orbit about the Sun, at positions A, B and C are K_A , K_B and K_C , respectively. AC is the major axis and SB is perpendicular to AC at the position of the Sun S as shown in the figure. Then



- (1) $K_B < K_A < K_C$
- (2) $K_B > K_A > K_C$
- (3) $K_A > K_B > K_C$
- (4) $K_A < K_B < K_C$

122. A solid sphere is in rolling motion. In rolling motion a body possesses translational kinetic energy (K_t) as well as rotational kinetic energy (K_r) simultaneously. The ratio $K_t : (K_t + K_r)$ for the sphere is

- (1) $10 : 7$
- (2) $2 : 5$
- (3) $5 : 7$
- (4) $7 : 10$

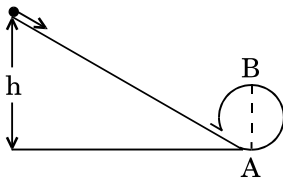
123. A solid sphere is rotating freely about its symmetry axis in free space. The radius of the sphere is increased keeping its mass same. Which of the following physical quantities would remain constant for the sphere ?

- (1) Rotational kinetic energy
- (2) Angular momentum
- (3) Moment of inertia
- (4) Angular velocity

124. If the mass of the Sun were ten times smaller and the universal gravitational constant were ten times larger in magnitude, which of the following is **not** correct ?

- (1) Time period of a simple pendulum on the Earth would decrease.
- (2) ' g ' on the Earth will not change.
- (3) Walking on the ground would become more difficult.
- (4) Raindrops will fall faster.

125. A body initially at rest and sliding along a frictionless track from a height h (as shown in the figure) just completes a vertical circle of diameter $AB = D$. The height h is equal to



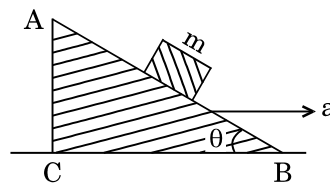
- (1) $\frac{7}{5}D$
 (2) $\frac{5}{4}D$
 (3) D
 (4) $\frac{3}{2}D$
126. Three objects, A : (a solid sphere), B : (a thin circular disk) and C : (a circular ring), each have the same mass M and radius R . They all spin with the same angular speed ω about their own symmetry axes. The amounts of work (W) required to bring them to rest, would satisfy the relation
- (1) $W_B > W_A > W_C$
 (2) $W_A > W_C > W_B$
 (3) $W_A > W_B > W_C$
 (4) $W_C > W_B > W_A$
127. A moving block having mass m , collides with another stationary block having mass $4m$. The lighter block comes to rest after collision. When the initial velocity of the lighter block is v , then the value of coefficient of restitution (e) will be
- (1) 0.8
 (2) 0.4
 (3) 0.25
 (4) 0.5
128. Which one of the following statements is **incorrect** ?
- (1) Frictional force opposes the relative motion.
 (2) Coefficient of sliding friction has dimensions of length.
 (3) Limiting value of static friction is directly proportional to normal reaction.
 (4) Rolling friction is smaller than sliding friction.

129. The moment of the force, $\vec{F} = 4\hat{i} + 5\hat{j} - 6\hat{k}$ at $(2, 0, -3)$, about the point $(2, -2, -2)$, is given by
- (1) $-7\hat{i} - 8\hat{j} - 4\hat{k}$
 (2) $-7\hat{i} - 4\hat{j} - 8\hat{k}$
 (3) $-4\hat{i} - \hat{j} - 8\hat{k}$
 (4) $-8\hat{i} - 4\hat{j} - 7\hat{k}$

130. A toy car with charge q moves on a frictionless horizontal plane surface under the influence of a uniform electric field \vec{E} . Due to the force $q\vec{E}$, its velocity increases from 0 to 6 m/s in one second duration. At that instant the direction of the field is reversed. The car continues to move for two more seconds under the influence of this field. The average velocity and the average speed of the toy car between 0 to 3 seconds are respectively

- (1) 1 m/s, 3.5 m/s
 (2) 1.5 m/s, 3 m/s
 (3) 1 m/s, 3 m/s
 (4) 2 m/s, 4 m/s

131. A block of mass m is placed on a smooth inclined wedge ABC of inclination θ as shown in the figure. The wedge is given an acceleration 'a' towards the right. The relation between a and θ for the block to remain stationary on the wedge is



- (1) $a = g \cos \theta$
 (2) $a = g \tan \theta$
 (3) $a = \frac{g}{\sin \theta}$
 (4) $a = \frac{g}{\operatorname{cosec} \theta}$

132. A student measured the diameter of a small steel ball using a screw gauge of least count 0.001 cm. The main scale reading is 5 mm and zero of circular scale division coincides with 25 divisions above the reference level. If screw gauge has a zero error of -0.004 cm, the correct diameter of the ball is
- (1) 0.053 cm
 (2) 0.529 cm
 (3) 0.525 cm
 (4) 0.521 cm

133. Unpolarised light is incident from air on a plane surface of a material of refractive index ' μ '. At a particular angle of incidence ' i ', it is found that the reflected and refracted rays are perpendicular to each other. Which of the following options is correct for this situation ?

(1) $i = \sin^{-1}\left(\frac{1}{\mu}\right)$

(2) $i = \tan^{-1}\left(\frac{1}{\mu}\right)$

(3) Reflected light is polarised with its electric vector perpendicular to the plane of incidence

(4) Reflected light is polarised with its electric vector parallel to the plane of incidence

134. In Young's double slit experiment the separation d between the slits is 2 mm, the wavelength λ of the light used is 5896 Å and distance D between the screen and slits is 100 cm. It is found that the angular width of the fringes is 0.20° . To increase the fringe angular width to 0.21° (with same λ and D) the separation between the slits needs to be changed to

(1) 2.1 mm

(2) 1.7 mm

(3) 1.9 mm

(4) 1.8 mm

135. An astronomical refracting telescope will have large angular magnification and high angular resolution, when it has an objective lens of

(1) large focal length and large diameter

(2) small focal length and small diameter

(3) large focal length and small diameter

(4) small focal length and large diameter

136. In which case is the number of molecules of water maximum ?

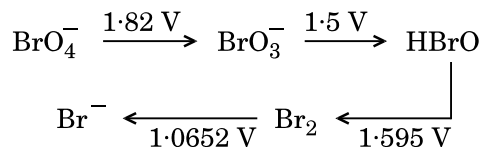
(1) 0.00224 L of water vapours at 1 atm and 273 K

(2) 10^{-3} mol of water

(3) 0.18 g of water

(4) 18 mL of water

137. Consider the change in oxidation state of Bromine corresponding to different emf values as shown in the diagram below :



Then the species undergoing disproportionation is

(1) Br_2

(2) HBrO

(3) BrO_4^-

(4) BrO_3^-

138. Among CaH_2 , BeH_2 , BaH_2 , the order of ionic character is

(1) $\text{BeH}_2 < \text{BaH}_2 < \text{CaH}_2$

(2) $\text{BaH}_2 < \text{BeH}_2 < \text{CaH}_2$

(3) $\text{CaH}_2 < \text{BeH}_2 < \text{BaH}_2$

(4) $\text{BeH}_2 < \text{CaH}_2 < \text{BaH}_2$

139. The correct difference between first- and second-order reactions is that

(1) a first-order reaction can be catalyzed; a second-order reaction cannot be catalyzed

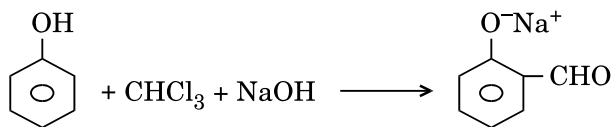
(2) the rate of a first-order reaction does depend on reactant concentrations; the rate of a second-order reaction does not depend on reactant concentrations

(3) the half-life of a first-order reaction does not depend on $[\text{A}]_0$; the half-life of a second-order reaction does depend on $[\text{A}]_0$

(4) the rate of a first-order reaction does not depend on reactant concentrations; the rate of a second-order reaction does depend on reactant concentrations

140. The type of isomerism shown by the complex $[\text{CoCl}_2(\text{en})_2]$ is
- (1) Ionization isomerism
 - (2) Linkage isomerism
 - (3) Coordination isomerism
 - (4) Geometrical isomerism
141. Which one of the following ions exhibits d-d transition and paramagnetism as well?
- (1) MnO_4^-
 - (2) MnO_4^{2-}
 - (3) $\text{Cr}_2\text{O}_7^{2-}$
 - (4) CrO_4^{2-}
142. The geometry and magnetic behaviour of the complex $[\text{Ni}(\text{CO})_4]$ are
- (1) square planar geometry and paramagnetic
 - (2) tetrahedral geometry and paramagnetic
 - (3) tetrahedral geometry and diamagnetic
 - (4) square planar geometry and diamagnetic
143. Iron carbonyl, $\text{Fe}(\text{CO})_5$ is
- (1) trinuclear
 - (2) dinuclear
 - (3) mononuclear
 - (4) tetranuclear
144. Match the metal ions given in Column I with the spin magnetic moments of the ions given in Column II and assign the **correct** code :
- | Column I | | Column II | |
|----------|------------------|-----------|------------------|
| a. | Co^{3+} | i. | $\sqrt{8}$ B.M. |
| b. | Cr^{3+} | ii. | $\sqrt{35}$ B.M. |
| c. | Fe^{3+} | iii. | $\sqrt{3}$ B.M. |
| d. | Ni^{2+} | iv. | $\sqrt{24}$ B.M. |
| | | v. | $\sqrt{15}$ B.M. |
- | | a | b | c | d |
|-----|-----|----|-----|-----|
| (1) | iv | i | ii | iii |
| (2) | iii | v | i | ii |
| (3) | i | ii | iii | iv |
| (4) | iv | v | ii | i |
145. Which one of the following elements is unable to form MF_6^{3-} ion?
- (1) B
 - (2) In
 - (3) Al
 - (4) Ga
146. In the structure of ClF_3 , the number of lone pairs of electrons on central atom 'Cl' is
- (1) four
 - (2) three
 - (3) two
 - (4) one
147. The correct order of N-compounds in its decreasing order of oxidation states is
- (1) $\text{HNO}_3, \text{NH}_4\text{Cl}, \text{NO}, \text{N}_2$
 - (2) $\text{NH}_4\text{Cl}, \text{N}_2, \text{NO}, \text{HNO}_3$
 - (3) $\text{HNO}_3, \text{NO}, \text{NH}_4\text{Cl}, \text{N}_2$
 - (4) $\text{HNO}_3, \text{NO}, \text{N}_2, \text{NH}_4\text{Cl}$
148. Which of the following statements is **not** true for halogens?
- (1) All but fluorine show positive oxidation states.
 - (2) Chlorine has the highest electron-gain enthalpy.
 - (3) All are oxidizing agents.
 - (4) All form monobasic oxyacids.
149. Considering Ellingham diagram, which of the following metals can be used to reduce alumina?
- (1) Mg
 - (2) Cu
 - (3) Zn
 - (4) Fe
150. The correct order of atomic radii in group 13 elements is
- (1) $\text{B} < \text{Ga} < \text{Al} < \text{Tl} < \text{In}$
 - (2) $\text{B} < \text{Ga} < \text{Al} < \text{In} < \text{Tl}$
 - (3) $\text{B} < \text{Al} < \text{Ga} < \text{In} < \text{Tl}$
 - (4) $\text{B} < \text{Al} < \text{In} < \text{Ga} < \text{Tl}$

151. In the reaction



the electrophile involved is

- (1) dichloromethyl anion ($\ominus\text{CHCl}_2$)
- (2) dichlorocarbene ($:\text{CCl}_2$)
- (3) formyl cation ($\oplus\text{CHO}$)
- (4) dichloromethyl cation ($\oplus\text{CHCl}_2$)

152. Carboxylic acids have higher boiling points than aldehydes, ketones and even alcohols of comparable molecular mass. It is due to their

- (1) more extensive association of carboxylic acid via van der Waals force of attraction
- (2) formation of intermolecular H-bonding
- (3) formation of carboxylate ion
- (4) formation of intramolecular H-bonding

153. Compound A, $\text{C}_8\text{H}_{10}\text{O}$, is found to react with NaOI (produced by reacting Y with NaOH) and yields a yellow precipitate with characteristic smell.

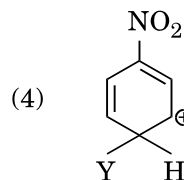
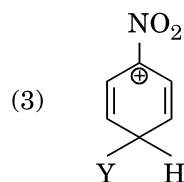
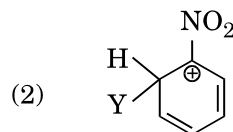
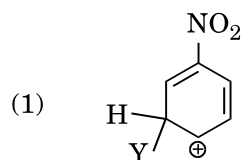
A and Y are respectively

- (1) and I_2
- (2) and I_2
- (3) and I_2
- (4) and I_2

154. Which of the following molecules represents the order of hybridisation sp^2 , sp^2 , sp , sp from left to right atoms ?

- (1) $\text{CH}_2 = \text{CH} - \text{CH} = \text{CH}_2$
- (2) $\text{CH}_3 - \text{CH} = \text{CH} - \text{CH}_3$
- (3) $\text{CH}_2 = \text{CH} - \text{C} \equiv \text{CH}$
- (4) $\text{HC} \equiv \text{C} - \text{C} \equiv \text{CH}$

155. Which of the following carbocations is expected to be most stable ?



156. Which of the following is correct with respect to -I effect of the substituents ? (R = alkyl)

- (1) $-\text{NH}_2 > -\text{OR} > -\text{F}$
- (2) $-\text{NR}_2 > -\text{OR} > -\text{F}$
- (3) $-\text{NR}_2 < -\text{OR} < -\text{F}$
- (4) $-\text{NH}_2 < -\text{OR} < -\text{F}$

- 157.** Regarding cross-linked or network polymers, which of the following statements is *incorrect* ?
- (1) Examples are bakelite and melamine.
 - (2) They contain strong covalent bonds in their polymer chains.
 - (3) They are formed from bi- and tri-functional monomers.
 - (4) They contain covalent bonds between various linear polymer chains.
- 158.** Nitration of aniline in strong acidic medium also gives m-nitroaniline because
- (1) In absence of substituents nitro group always goes to m-position.
 - (2) In acidic (strong) medium aniline is present as anilinium ion.
 - (3) In electrophilic substitution reactions amino group is meta directive.
 - (4) In spite of substituents nitro group always goes to only m-position.
- 159.** The difference between amylose and amylopectin is
- (1) Amylopectin have 1 → 4 α-linkage and 1 → 6 β-linkage
 - (2) Amylose is made up of glucose and galactose
 - (3) Amylose have 1 → 4 α-linkage and 1 → 6 β-linkage
 - (4) Amylopectin have 1 → 4 α-linkage and 1 → 6 α-linkage
- 160.** A mixture of 2.3 g formic acid and 4.5 g oxalic acid is treated with conc. H₂SO₄. The evolved gaseous mixture is passed through KOH pellets. Weight (in g) of the remaining product at STP will be
- (1) 2.8
 - (2) 4.4
 - (3) 3.0
 - (4) 1.4
- 161.** Which of the following oxides is most acidic in nature ?
- (1) BaO
 - (2) CaO
 - (3) BeO
 - (4) MgO
- 162.** For the redox reaction
- $$\text{MnO}_4^- + \text{C}_2\text{O}_4^{2-} + \text{H}^+ \longrightarrow \text{Mn}^{2+} + \text{CO}_2 + \text{H}_2\text{O}$$
- the correct coefficients of the reactants for the balanced equation are
- | | | | |
|-----|------------------|-----------------------------|--------------|
| | MnO_4^- | $\text{C}_2\text{O}_4^{2-}$ | H^+ |
| (1) | 2 | 16 | 5 |
| (2) | 5 | 16 | 2 |
| (3) | 2 | 5 | 16 |
| (4) | 16 | 5 | 2 |
- 163.** Which one of the following conditions will favour maximum formation of the product in the reaction,
- $$\text{A}_2(\text{g}) + \text{B}_2(\text{g}) \rightleftharpoons \text{X}_2(\text{g}) \quad \Delta_r H = -X \text{ kJ ?}$$
- (1) High temperature and high pressure
 - (2) High temperature and low pressure
 - (3) Low temperature and low pressure
 - (4) Low temperature and high pressure
- 164.** When initial concentration of the reactant is doubled, the half-life period of a zero order reaction
- (1) is tripled
 - (2) remains unchanged
 - (3) is doubled
 - (4) is halved
- 165.** The bond dissociation energies of X₂, Y₂ and XY are in the ratio of 1 : 0.5 : 1. ΔH for the formation of XY is – 200 kJ mol⁻¹. The bond dissociation energy of X₂ will be
- (1) 800 kJ mol⁻¹
 - (2) 400 kJ mol⁻¹
 - (3) 100 kJ mol⁻¹
 - (4) 200 kJ mol⁻¹
- 166.** The correction factor 'a' to the ideal gas equation corresponds to
- (1) electric field present between the gas molecules
 - (2) forces of attraction between the gas molecules
 - (3) volume of the gas molecules
 - (4) density of the gas molecules

167. Following solutions were prepared by mixing different volumes of NaOH and HCl of different concentrations :

- 60 mL $\frac{M}{10}$ HCl + 40 mL $\frac{M}{10}$ NaOH
- 55 mL $\frac{M}{10}$ HCl + 45 mL $\frac{M}{10}$ NaOH
- 75 mL $\frac{M}{5}$ HCl + 25 mL $\frac{M}{5}$ NaOH
- 100 mL $\frac{M}{10}$ HCl + 100 mL $\frac{M}{10}$ NaOH

pH of which one of them will be equal to 1 ?

- d
- c
- a
- b

168. On which of the following properties does the coagulating power of an ion depend ?

- Both magnitude and sign of the charge on the ion
- The sign of charge on the ion alone
- Size of the ion alone
- The magnitude of the charge on the ion alone

169. Given van der Waals constant for NH_3 , H_2 , O_2 and CO_2 are respectively 4.17, 0.244, 1.36 and 3.59, which one of the following gases is most easily liquefied ?

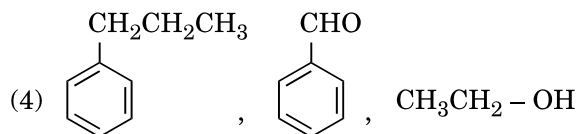
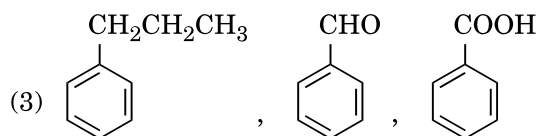
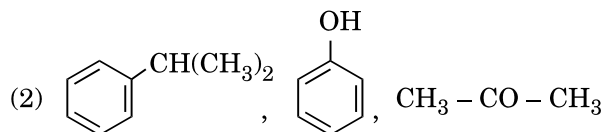
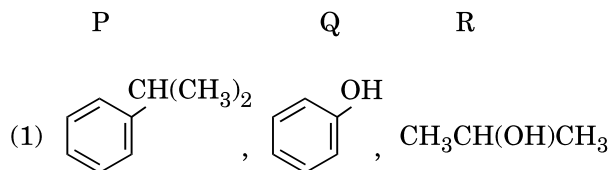
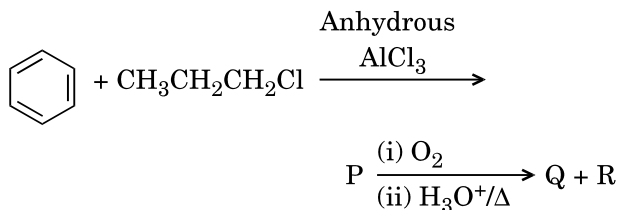
- O_2
- CO_2
- H_2
- NH_3

170. The solubility of BaSO_4 in water is $2.42 \times 10^{-3} \text{ gL}^{-1}$ at 298 K. The value of its solubility product (K_{sp}) will be

(Given molar mass of $\text{BaSO}_4 = 233 \text{ g mol}^{-1}$)

- $1.08 \times 10^{-14} \text{ mol}^2 \text{ L}^{-2}$
- $1.08 \times 10^{-8} \text{ mol}^2 \text{ L}^{-2}$
- $1.08 \times 10^{-12} \text{ mol}^2 \text{ L}^{-2}$
- $1.08 \times 10^{-10} \text{ mol}^2 \text{ L}^{-2}$

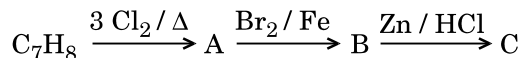
171. Identify the major products P, Q and R in the following sequence of reactions :



172. Which of the following compounds can form a zwitterion ?

- Benzoic acid
- Glycine
- Acetanilide
- Aniline

173. The compound C_7H_8 undergoes the following reactions :



The product 'C' is

- (1) 3-bromo-2,4,6-trichlorotoluene
 (2) *p*-bromotoluene
 (3) *o*-bromotoluene
 (4) *m*-bromotoluene
174. Which oxide of nitrogen is **not** a common pollutant introduced into the atmosphere both due to natural and human activity ?
- (1) N_2O
 (2) NO
 (3) NO_2
 (4) N_2O_5
175. The compound A on treatment with Na gives B, and with PCl_5 gives C. B and C react together to give diethyl ether. A, B and C are in the order
- (1) C_2H_5Cl , C_2H_6 , C_2H_5OH
 (2) C_2H_5OH , C_2H_5ONa , C_2H_5Cl
 (3) C_2H_5OH , C_2H_5Cl , C_2H_5ONa
 (4) C_2H_5OH , C_2H_6 , C_2H_5Cl
176. Hydrocarbon (A) reacts with bromine by substitution to form an alkyl bromide which by Wurtz reaction is converted to gaseous hydrocarbon containing less than four carbon atoms. (A) is
- (1) $CH_3 - CH_3$
 (2) CH_4
 (3) $CH_2 = CH_2$
 (4) $CH \equiv CH$

177. Consider the following species :



Which one of these will have the highest bond order ?

- (1) CN^+
 (2) CN
 (3) CN^-
 (4) NO
178. Magnesium reacts with an element (X) to form an ionic compound. If the ground state electronic configuration of (X) is $1s^2 2s^2 2p^3$, the simplest formula for this compound is
- (1) Mg_2X
 (2) Mg_3X_2
 (3) MgX_2
 (4) Mg_2X_3
179. Iron exhibits bcc structure at room temperature. Above $900^\circ C$, it transforms to fcc structure. The ratio of density of iron at room temperature to that at $900^\circ C$ (assuming molar mass and atomic radii of iron remains constant with temperature) is
- (1) $\frac{3\sqrt{3}}{4\sqrt{2}}$
 (2) $\frac{1}{2}$
 (3) $\frac{4\sqrt{3}}{3\sqrt{2}}$
 (4) $\frac{\sqrt{3}}{\sqrt{2}}$
180. Which one is a **wrong** statement ?
- (1) The electronic configuration of N atom is
- | | | | | |
|------------------------------|------------------------------|--------------------|--------------------|----------------------|
| $1s^2$ | $2s^2$ | $2p_x^1$ | $2p_y^1$ | $2p_z^1$ |
| $\boxed{\uparrow\downarrow}$ | $\boxed{\uparrow\downarrow}$ | $\boxed{\uparrow}$ | $\boxed{\uparrow}$ | $\boxed{\downarrow}$ |
- (2) The value of m for d_{z^2} is zero.
 (3) An orbital is designated by three quantum numbers while an electron in an atom is designated by four quantum numbers.
 (4) Total orbital angular momentum of electron in 's' orbital is equal to zero.

SPACE FOR ROUGH WORK

SPACE FOR ROUGH WORK

Read carefully the following instructions :

1. Each candidate must show on demand his/her Admit Card to the Invigilator.
2. No candidate, without special permission of the Superintendent or Invigilator, would leave his/her seat.
3. The candidates should not leave the Examination Hall without handing over their Answer Sheet to the Invigilator on duty and sign the Attendance Sheet twice. **Cases where a candidate has not signed the Attendance Sheet second time will be deemed not to have handed over the Answer Sheet and dealt with as an unfair means case.**
4. Use of Electronic/Manual Calculator is prohibited.
5. The candidates are governed by all Rules and Regulations of the examination with regard to their conduct in the Examination Hall. All cases of unfair means will be dealt with as per Rules and Regulations of this examination.
6. No part of the Test Booklet and Answer Sheet shall be detached under any circumstances.
7. The candidates will write the Correct Test Booklet Code as given in the Test Booklet/Answer Sheet in the Attendance Sheet.

BOOKLET CODE - ACHLA (CC)

Q.No.	Answer
1.	(1)
2.	(1)
3.	(3)
4.	(2)
5.	(4)
6.	(3)
7.	(3)
8.	(3)
9.	(1)
10.	(1)
11.	(4)
12.	(4)
13.	(3)
14.	(3)
15.	(3)
16.	(2)
17.	(4)
18.	(3)
19.	(1)
20.	(4)
21.	(1)
22.	(1)
23.	(4)
24.	(2)
25.	(1)
26.	(4)
27.	(1)
28.	(3)
29.	(4)
30.	(1)
31.	(1)
32.	(3)
33.	(3)
34.	(2)
35.	(4)
36.	(1)
37.	(4)
38.	(2)
39.	(4)
40.	(2)
41.	(3)
42.	(3)
43.	(4)
44.	(4)
45.	(4)

Q.No.	Answer
46.	(1)
47.	(1)
48.	(4)
49.	(3)
50.	(1)
51.	(1)
52.	(4)
53.	(3)
54.	(2)
55.	(4)
56.	(4)
57.	(2)
58.	(3)
59.	(1)
60.	(3)
61.	(1)
62.	(1)
63.	(4)
64.	(3)
65.	(4)
66.	(1)
67.	(2)
68.	(3)
69.	(2)
70.	(4)
71.	(4)
72.	(3)
73.	(2)
74.	(4)
75.	(1)
76.	(3)
77.	(4)
78.	(3)
79.	(3)
80.	(3)
81.	(1)
82.	(2)
83.	(1)
84.	(3)
85.	(1)
86.	(2)
87.	(3)
88.	(2)
89.	(4)
90.	(4)

Q.No.	Answer
91.	(3)
92.	(4)
93.	(4)
94.	(2)
95.	(4)
96.	(3)
97.	(2)
98.	(1)
99.	(1)
100.	(3)
101.	(1)
102.	(3)
103.	(3)
104.	(1)
105.	(3)
106.	(3)
107.	(4)
108.	(4)
109.	(4)
110.	(4)
111.	(4)
112.	(4)
113.	(3)
114.	(3)
115.	(3)
116.	(2)
117.	(1)
118.	(1)
119.	(3)
120.	(1)
121.	(4)
122.	(4)
123.	(2)
124.	(3)
125.	(4)
126.	(3)
127.	(4)
128.	(3)
129.	(3)
130.	(1)
131.	(1)
132.	(1)
133.	(4)
134.	(1)
135.	(3)

Q.No.	Answer
136.	(3)
137.	(4)
138.	(1)
139.	(3)
140.	(4)
141.	(1)
142.	(1)
143.	(3)
144.	(1)
145.	(4)
146.	(2)
147.	(3)
148.	(3)
149.	(2)
150.	(4)*
151.	(3)
152.	(4)
153.	(1)
154.	(4)
155.	(1)
156.	(1)
157.	(4)
158.	(4)
159.	(2)
160.	(4)
161.	(3)
162.	(1)
163.	(1)
164.	(1)
165.	(2)
166.	(4)
167.	(4)
168.	(1)
169.	(2)
170.	(2)
171.	(3)
172.	(2)
173.	(2)
174.	(3)
175.	(2)
176.	(1)
177.	(4)
178.	(1)
179.	(1)
180.	(2)